

POWER SUPPLY SCHEMATIC DIAGRAM SCHEMA DES CIRCUITS D'ALIMENTATIONS - SCHALTBILD NETZTEIL - SCHEMA DEI CIRCUITI DI ALIMENTAZIONE - ESQUEMA DE LOS CIRCUITOS DE ALIMENTACIÓN

**POWE**



Use isolating mains transformer.  
 Utiliser un transformateur isolateur du secteur.  
 Einen Trenntrafo verwenden.  
 Utilizar un transformador aislador de red.  
 Utilizzare un trasformatore per isolarvi dalla rete.

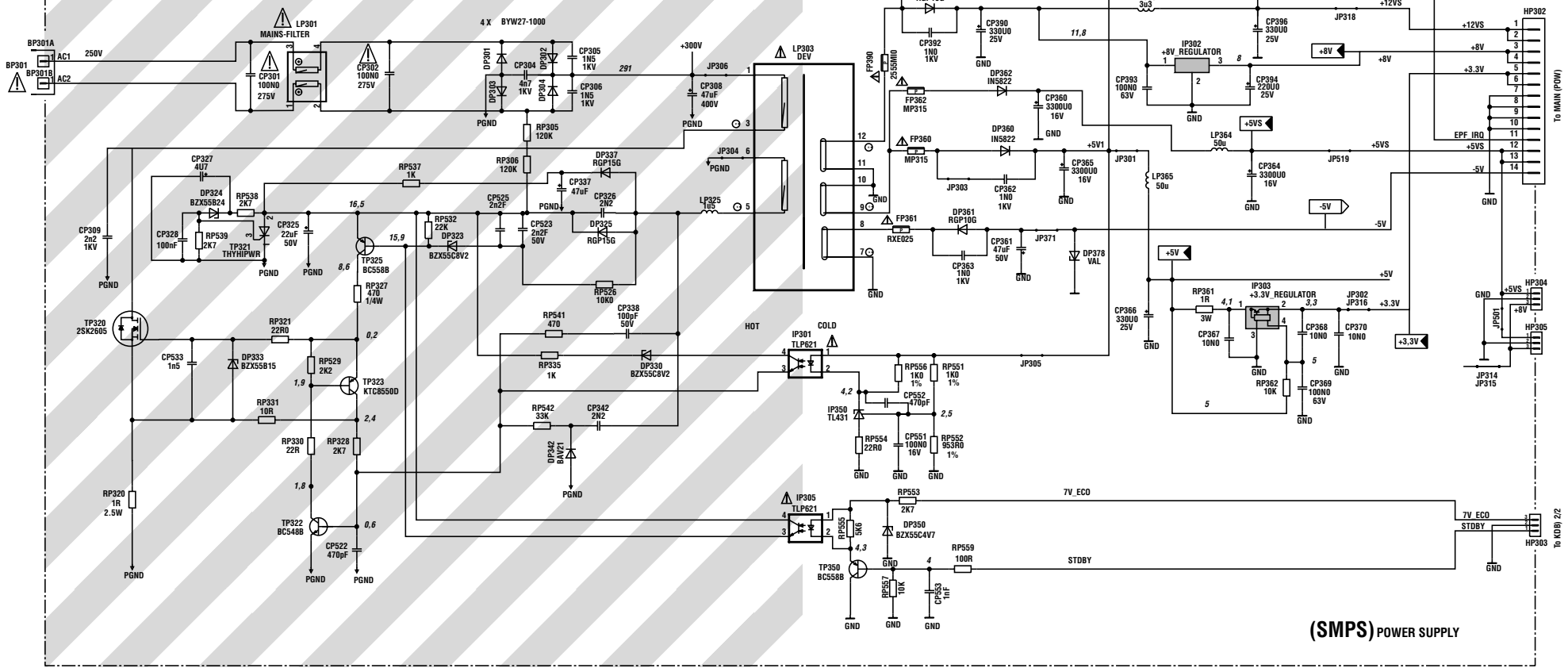
**Note :**  
 During measurements in the power supply unit  
 - Use the primary power unit ground (PGND).  
**Attention :**  
 Mesure dans la partie primaire de l'alimentation  
 - Utiliser la masse du bloc alimentation (PGND).  
**Achtung :**  
 Bei Messungen im Primärnetzteil  
 - Primärnetzteilmasse verwenden (PGND).  
**Attenzione :**  
 misure nell'alimentatore primario  
 - usare massa alimentazione primario (PGND).  
**Cuidado :**  
 Medida en el bloque de alimentación  
 - Utilizar la masa del bloque de alimentación (PGND).

**Safety Part**  
 When repairing, use original part only  
 Pièce de sécurité  
 N'utilisez que les pièces d'origine

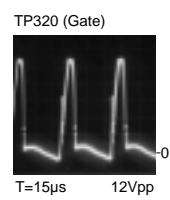
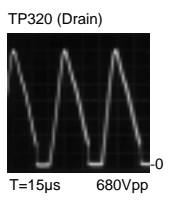
**Sicherheitsbauteil**  
 Bei Ersatz nur Originalteile verwenden  
 Componenti di sicurezza  
 Per la riparazione utilizzare solo componenti originali

**Utilice solo piezas originales**  
 Pieza de seguridad

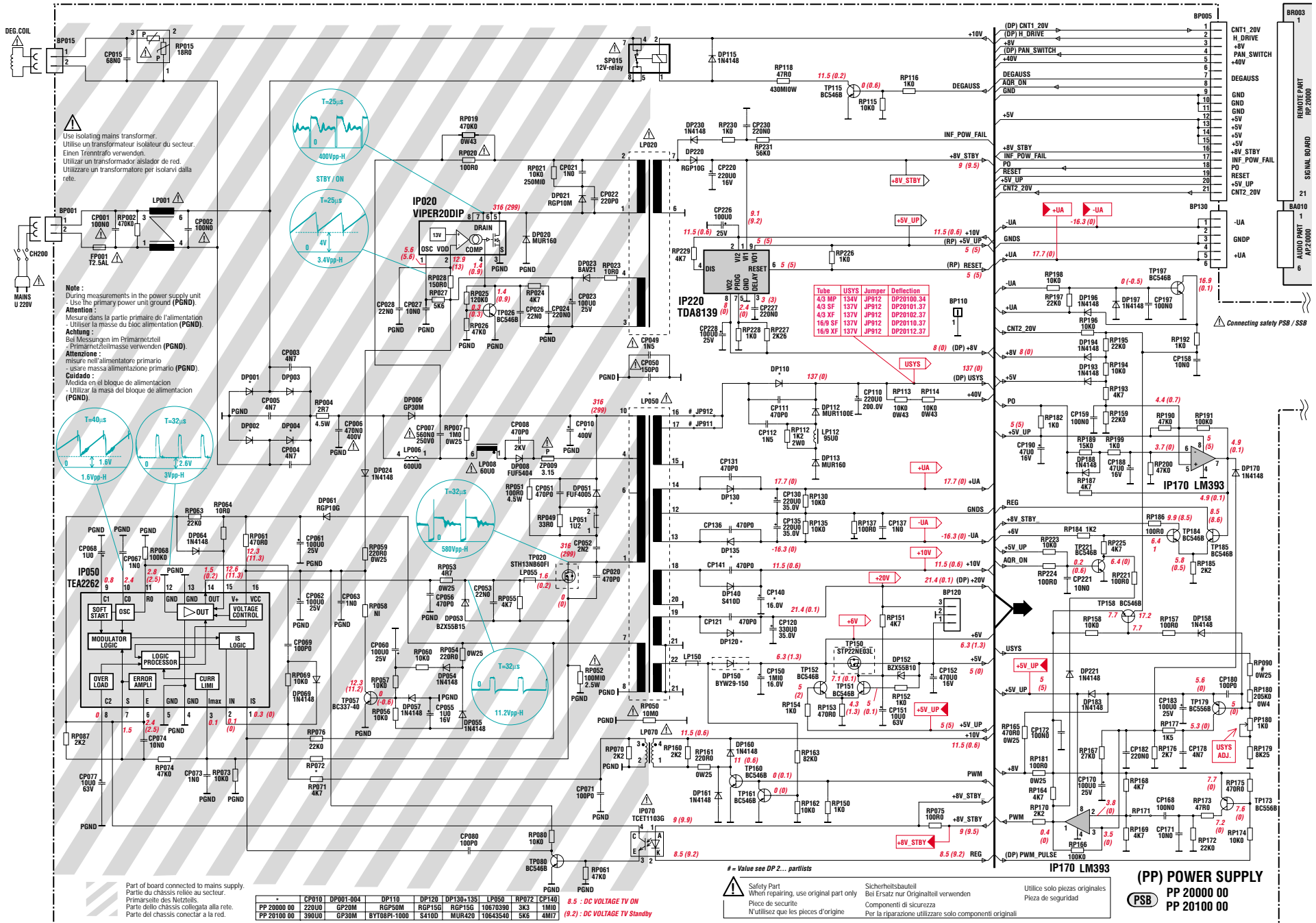
Part of board connected to mains supply.  
 Partie du châssis reliée au secteur.  
 Primärseite des Netzteils.  
 Parte dello chassis collegata alla rete.  
 Parte del chassis conectar a la red.



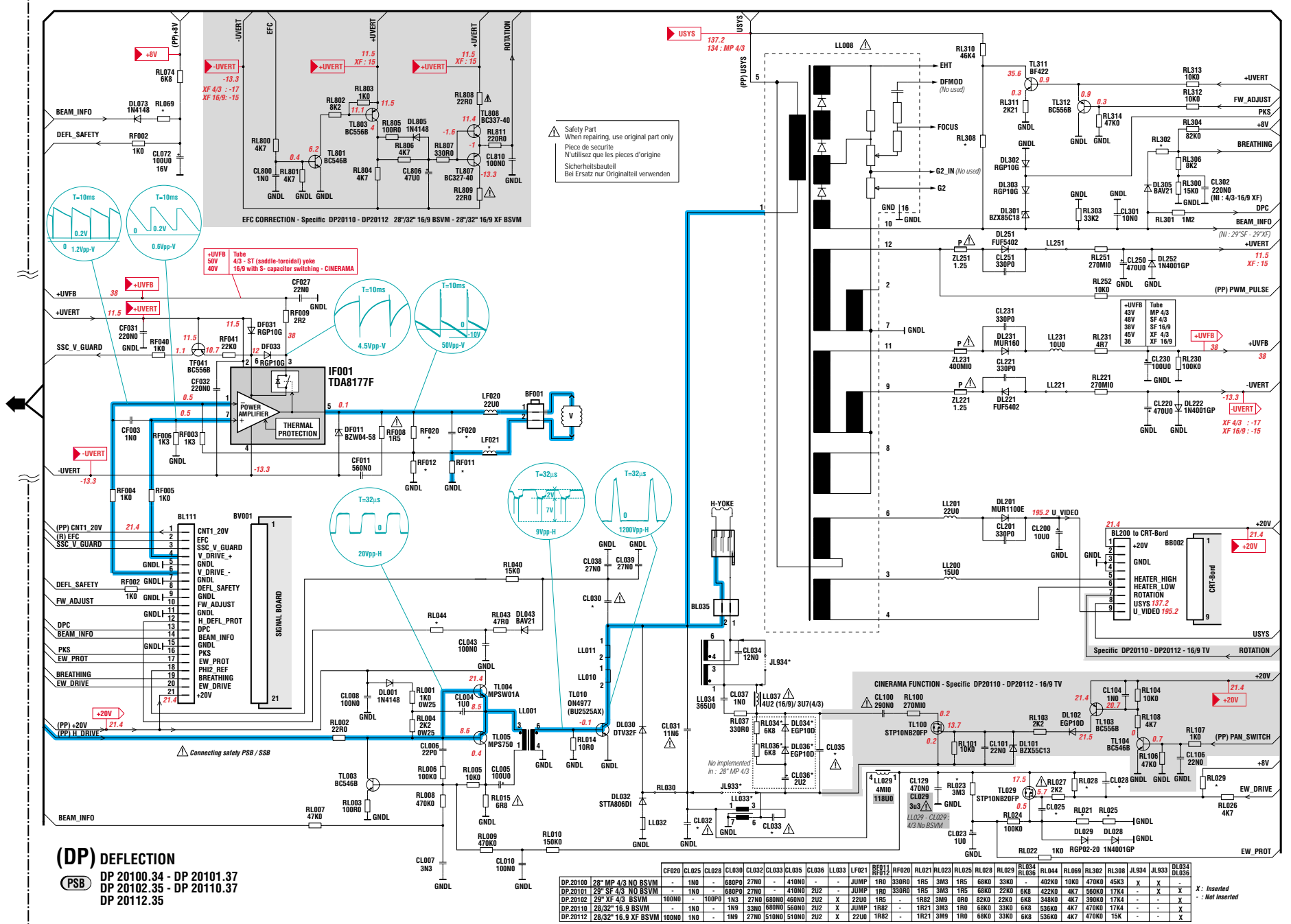
**(SMPS) POWER SUPPLY**



POWER / SCAN BOARD - PLATINE ALIMENTATION / BALAYAGE - NETZTEIL- UND ABLENKPLATINE - PIASTRA DEFLESSIONE / ALIMENTAZIONE - PLACA ALIMENTACIÓN / BARRIDOS  
 POWER SUPPLY PART - PARTIE ALIMENTATION - NETZTEIL - ALIMENTAZIONE - ALIMENTACIÓN



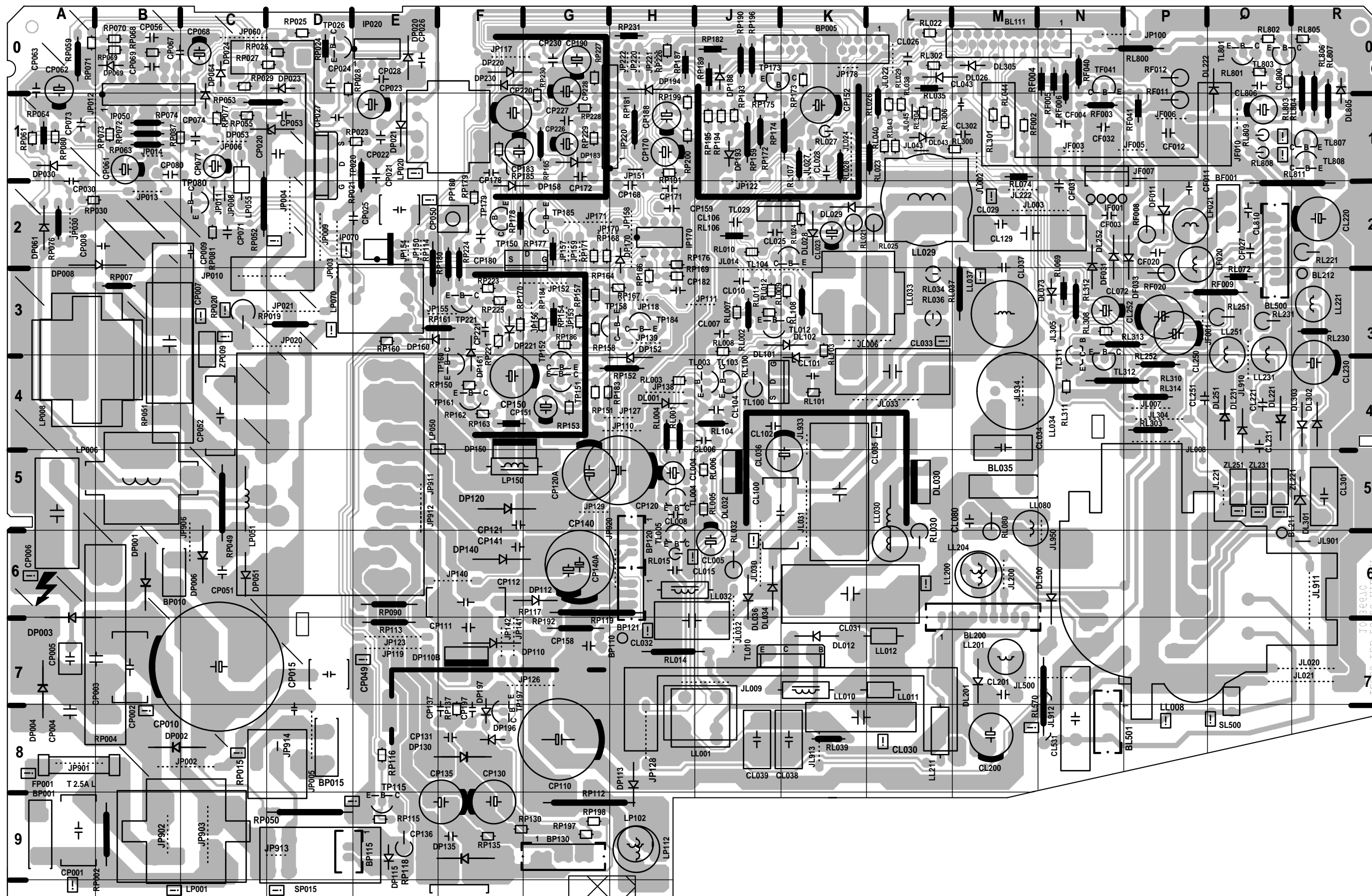
POWER / SCAN BOARD - PLATINE ALIMENTATION / BALAYAGE - NETZTEIL- UND ABLENKPLATINE - PIASTRA DEFLESSIONE / ALIMENTAZIONE - PLACA ALIMENTACIÓN / BARRIDOS SCANNING - BALAYAGE - ABLENKUNG - BARRIDO - SCANSIONE



DP	20100	20101	20102	20110	20112
28° MP 4/3 NO BSVM	1N0	-	680P0	27N0	-
29° SF 4/3 NO BSVM	1N0	-	680P0	27N0	-
29° XF 4/3 BSVM	10N0	-	100P0	1N3	27N0
28/32° 16.9 BSVM	1N0	-	1N9	33N0	68N0
28/32° 16.9 XF BSVM	10N0	1N0	-	1N9	27N0

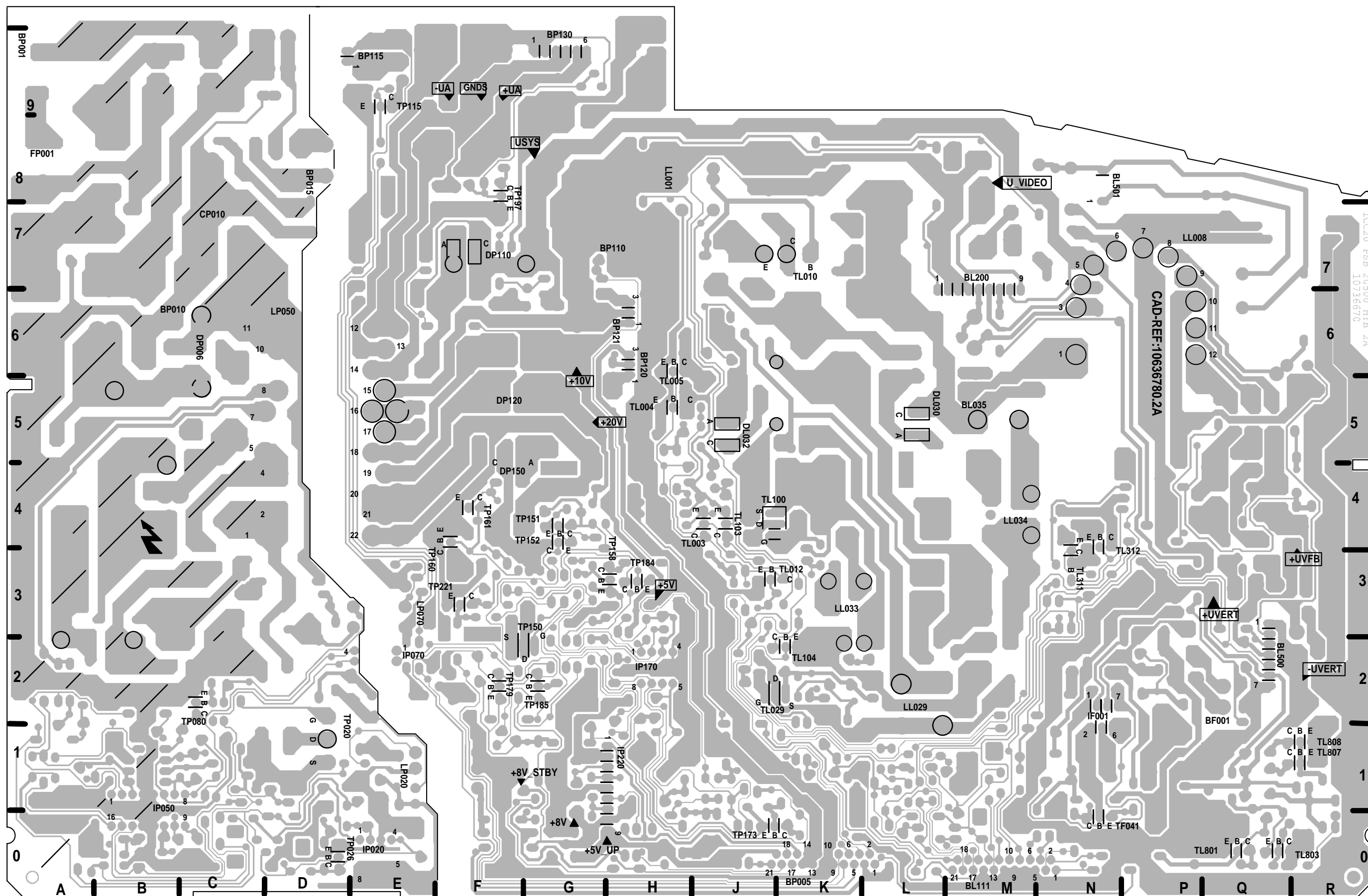
POWER / SCAN BOARD - PLATINE ALIMENTATION / BALAYAGE - NETZTEIL- UND ABLENKPLATINE - PIASTRA DEFLESSIONE / ALIMENTAZIONE - PLACA ALIMENTACIÓN / BARRIDOS

COMPONENT SIDE - COTE COMPOSANTS - BESTÜCKUNGSSEITE - LATO COMPONENTI - LADO COMPONENTES



POWER / SCAN BOARD - PLATINE ALIMENTATION / BALAYAGE - NETZTEIL- UND ABLENKPLATINE - PIASTRA DEFLESSIONE / ALIMENTAZIONE - PLACA ALIMENTACIÓN / BARRIDOS

SOLDER SIDE - CÔTE SOUDURES - LÖTSEITE - LATO SALDATURE - LADO SOLDADURAS



ICC20 PSB 20500 HYB 2A  
10736670