

3.2 Internal function key

Key “MENU”	Key “VOL +”	Key “VOL-”	Key “CH+” ▲	Key “CH-” ▼	Key “Input”	DC power	AC Power	functions
			○				○	Factory Reset
						○	○	Power Lock
○							○	OSD Lock
					○		○	Burn in mode
				○			○	Factory mode

Combination (Short-cut) Keys: A set of combination keys has been pre-defined for use when the OSD is not active:

- ⇒ FACTORY RESET : “Up key” + AC power on
- ⇒ POWER LOCK : “Power key” + AC power on
- ⇒ OSD LOCK : “Menu key” + AC power on
- ⇒ FACTORY BURN IN MODE : “Input key” + AC power on
- ⇒ FACTORY MODE : “Down key” + AC power on
 - DRA for RGB
 - DRA for YPbPr
 - Cool color
 - Normal color
 - User color
 - Y/C delay (3D)

FACTORY RESET → Shall reset all functions to their factory default, including resetting of parental control password.

POWER LOCK → Shall enable the monitor to automatically “TURN ON” in case AC power is cut, then restored.

OSD LOCK → Shall disable the OSD in cases where it’s not desired for user to further modify settings.

FACTORY BURN IN MODE → Shall enter Factory Burn in mode. No Consumer Application Expected

FACTORY MODE

DRA for RGB → RGB Reset,–

DRA for YPbPr → YPbPr Reset,

COOL color → Setting 13000°K 0.270 ±0.030, 0.272 ±0.030 color temperature.

NORMAL color → Setting 10000°K 0.281±0.030, 0.288 ±0.030 color temperature.

User color → Setting 9300°K 0.285 ±0.030, 0.294 ±0.030 color temperature.

Y/C delay (3D) → Setting 3D Comb filter Y/C delay(Value range :1~15; default value : 8).

3.3 OSD Functions

All the function settings for your product are controlled either via the remote control or using the bottom control keys on the front panel. to display the OSD main menu, press Menu button on the front control keys or the MENU key on the remote control. Use ◀ / ▶ arrow keys to toggle the sub OSD menu display (PICTURE >> AUDIO >> SOURCE >> GRAPHIC >> TV >> CLOCK >> SETUP). Use into select the details of each sub OSD Menu,

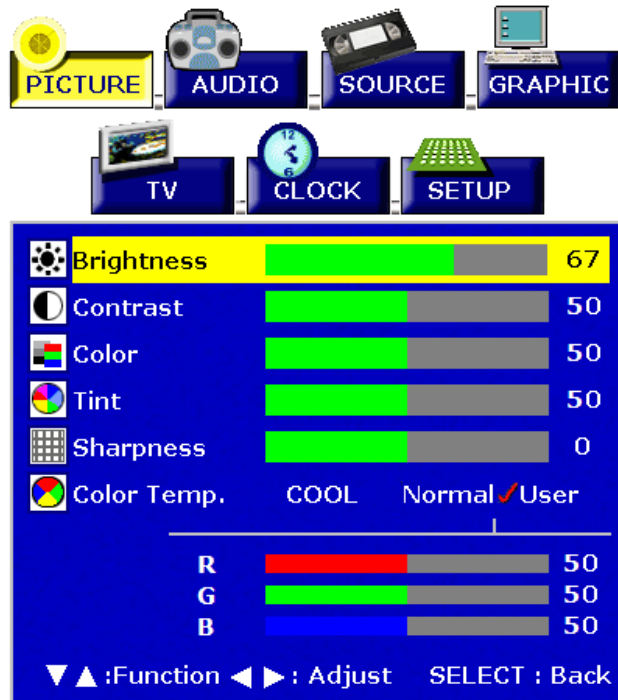


Main Menu

Into the Sub menu, press **Input** on the front control keys or the **ENTER** key on the remote control.



PICTURE:



PICTURE

Function Name	Explanation
Brightness	Brightness Adjustment
Contrast	Contrast Adjustment
Color	Color Adjustment
Tint	Tint Adjustment
Sharpness	Sharpness Adjustment
Color Temp	Color Temp Adjustment (Cool, Normal, User)

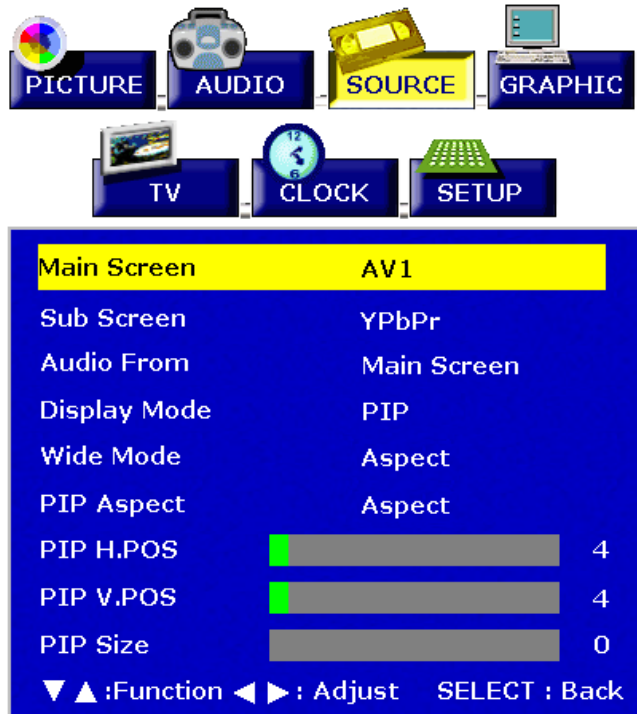
AUDIO:



AUDIO

Function Name	Explanation
Volume	Volume Adjustment
Bass	Bass Adjustment
Treble	Treble Adjustment
Balance	Balance Adjustment
Speaker	Turn Speaker OFF or ON
Line Out	Sets Line Out Level to a. Variable: Sound level will change with Volume. b. Fixed: Sound level remains constant.
Subwoofer	Turn Subwoofer OFF or ON
MTS	MTS Selection NOTE: This function is dependent on type of broadcast being received.
BBE	Turn BBE ON or OFF

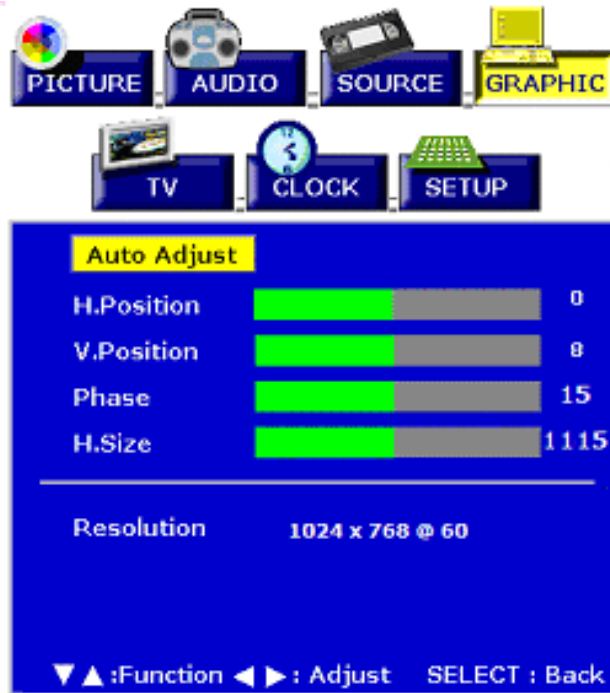
SOURCE:



SOURCE

Function Name	Explanation
Main Screen	Select main screen sources (TV => AV1 => AV2 => S-VIDEO1 => S-VIDEO2 => YPbPr => YCbCr => RGB => DVI => AV3)
Sub Screen	Select sub screen sources (OFF => TV => AV1 => AV2 => S-VIDEO1 => S-VIDEO2 => YCbCr => AV3)
Audio From	Select main screen or sub-screen audio sources
Display Mode	Full => PIP => POP Full: Normal. PIP: Displays selected Sub Screen within the Main Screen. POP: Displays selected Sub Screen next to the Main Screen.
Wide Mode	Aspect => Wide => 1:1
PIP Aspect	Aspect => Wide
PIP H-POS	Sub Screen display H-Position adjustment
PIP V-POS	Sub Screen display V-Position adjustment
PIP Size	Sub Screen display Size adjustment

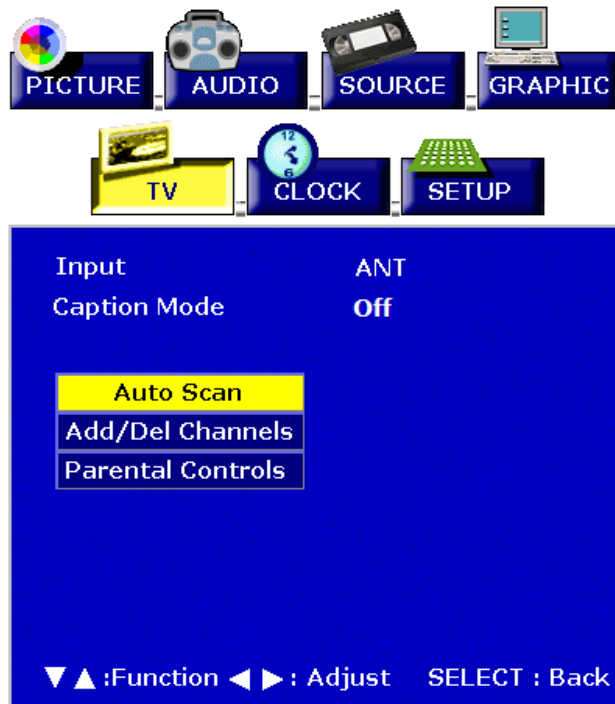
GRAPHIC:



GRAPHIC

Function Name	Explanation
Auto Adjust	Auto Adjust the Horizontal Phase of the image
H. Position	Horizontal Position on the image adjustment
V. Position	Vertical Position on the image adjustment
Phase	Phase adjustment
H. Size	Clock adjustment
Resolution	Display Source Resolution and Frequency

TV:



TV

Function Name	Explanation
Input	Select TV Source Type (ANT => Cable => HRC => IRC)
Caption Mode	Turn the Close Caption OFF or CC1, CC2, CC3, CC4, TT1, TT2, TT3, TT4
Auto Scan	Auto Scan on TV Channels
Add/Del Channels	Add / Delete the selected TV channel
Parental Controls	Adjust parental control settings. <div style="border: 1px solid black; padding: 5px; width: fit-content;"> <p style="text-align: center;">Password</p> <p style="text-align: center;">**** OK</p> </div> <p style="text-align: center;">Verify OK</p>
Password Edit	<div style="border: 1px solid black; padding: 5px; width: fit-content;"> <p style="text-align: center;">New Code 1111 Confirm 1111 OK</p> </div> <p style="text-align: center;">Change Password</p>
TV Rating	<div style="border: 1px solid black; padding: 5px; width: fit-content;"> <p>TV - Y B</p> <p>TV - Y7 B FV B</p> <p>TV - G B</p> <p>TV - PG B V B L B S B D B</p> <p>TV - 14 B V B L B S B D B</p> <p>TV - MA B V B L B S B</p> </div> <p>B: Block</p>

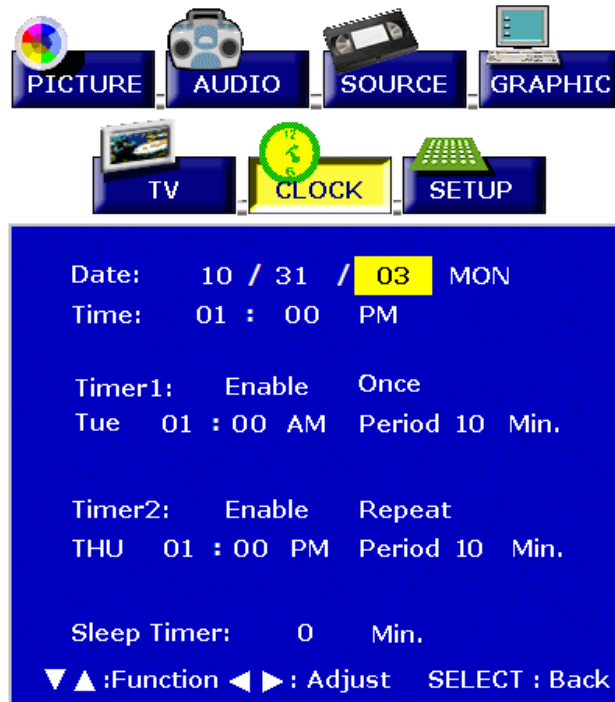
U: Unblock
 <<< **AGE** >>>
TV Y: All Children
TV Y7: Directed to Older Children
TV G: General Audience
TV PG: Parental Guidance Suggested
TV 14: Parents Strongly Cautioned
TV MA: Mature Audience Only
 <<< **CONTENT** >>>
FV: Fantasy Violence
V: Violence
L: Stronger Language
S: Sexual Situation
D: Suggestive Dialogue

MPAA Rating
 (Movie Rating)

G	U
PG	U
PG - 13	U
R	U
NC - 17	U
X	U

B: Block
 U: Unblock
G: General audience
PG: Parental Guidance suggested
PG 13: Parents strongly cautioned
R: Restricted
NC 17: No one 17 and under admitted
X: Adult audience only

CLOCK:



Clock

Function Name	Explanation
Date	Display present date in MM/DD/YY format
Time	Display present time
Timer1	Set the time and duration for the monitor to automatically turn on.
Timer2	Set the time and duration for the monitor to automatically turn on.
Sleep Timer	Set Time to turn OFF the unit (0--> 5 min--> 10 min--> 15 min--> 20 min--> 25 min--> 30 min--> 35 min--> 40 min--> 45 min--> 50 min--> 55 min--> 60 min--> 65 min--> 70 min --> 75 min--> 80 min--> 85 min--> 90 min--> 95 min --> 100 min--> 105 min--> 110 min--> 115 min--> 120 min)

SETUP:



SETUP

Function Name	Explanation
OSD H-POS	OSD Horizontal Position adjustment
OSD V-POS	OSD Vertical Position adjustment
OSD Timeout	Set Time to turn OFF the OSD
Language	OSD language
INFO	Display Input Source, Type and Signal
Reset	Restore factory defaults