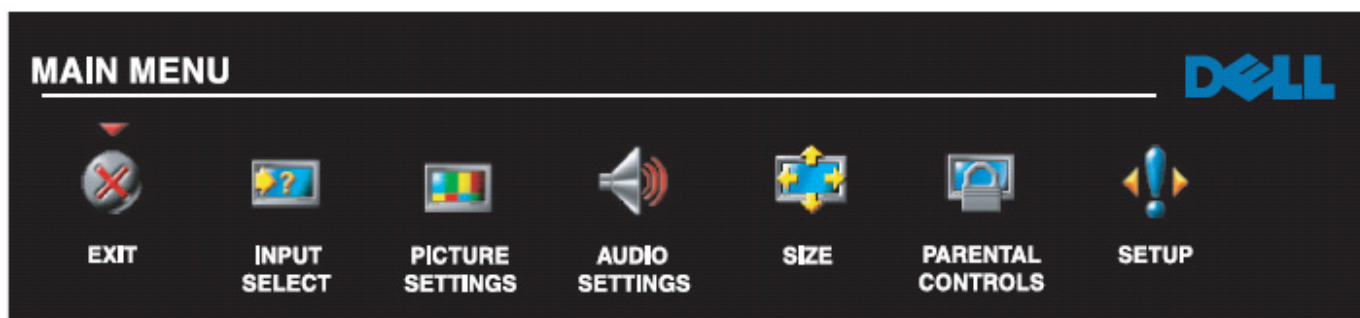


2.3 OSD Operating

Using Remote Control With the TV Menu

1. To enter the TV menu, press the Menu button. Seven icons appear along the bottom of the screen.



2. Move the left and right buttons (volume buttons) to move between the icons. The icon appears highlighted as you move through the menu.
3. To select an option, push the OK button when the icon is highlighted.
4. A new menu appears for that selected option, use the up and down buttons (channel buttons) to move through the various setting.

Note: A red arrow appears next to the setting as you navigate through the options. A check mark appears next to the option that you have selected.

5. Use the left and right buttons (volume buttons) and the OK button to adjust or select setting.

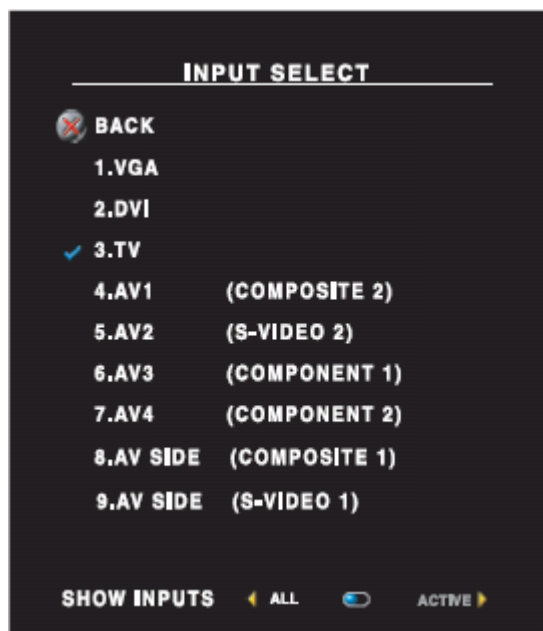
Note: You can select EXIT at any time to return to the main menu.

6. After you have made your selections, select Exit to return to the main menu.
7. To exit the TV menu, select the EXIT icon and press OK.

Selecting your TV Menu Language

1. Press menu to enter the TV menu.
2. Select Setup.
3. In the Setup menu, select language and select the language that you want the TV menu to appear in.

Input Select Menu



The Input Select menu allows you to select the proper source based on how you have your LCD TV display and video equipment connected. Press Input on the remote to go directly to the Input Select Menu. You can also press Menu and Select Input Select from the main menu.

VGA – Select when your LCD TV display is being used as a computer monitor and you have connected the computer using a VGA cable.

DVI – Select when your LCD TV display is being used as a computer monitor and you have connected the computer or when you have connected a device, such as a DVD player using the DVI cable.

TV – Select when you have your antenna or cable TV box connected to the ANT/Cable connect.

AV1 (Component 1) – Select when you have a video device, such as a video game system, connect to the composite connector.

AV2 (Component 2) – Select when you have a video device, such as a DVD player, connected to the composite connector.

AV3 (Component 1) — Select when you have a video device, such as a DVD player, connected to the component connector. See "Bottom View" on page 8 for the location of the component connector.

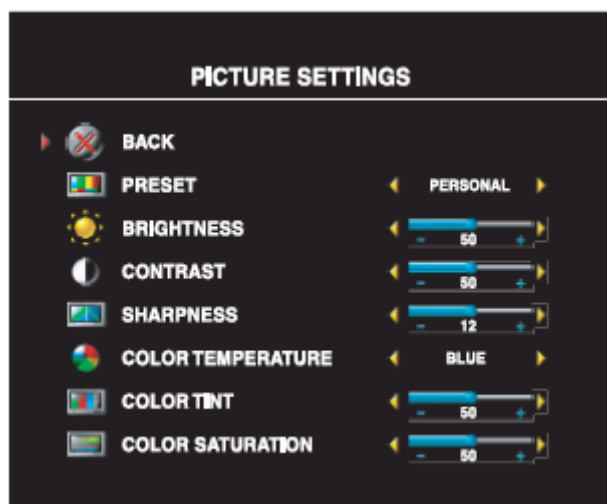
AV4 (Component 2) — Select when you have a video device, such as a DVD player, connected to the component connector. See "Bottom View" on page 8 for the location of the component connector.

AV SIDE (Composite 1) – Select when you have a video device, such as a video game system, connected to the composite connector on the side of the LCD TV display.

AV SIDE (S-Video 1) – Select when you have a video device, such as a VCR, connected to the S-Video connector on the side of the LCD TV display.

SHOW INPUTS – Show Inputs allows you to select active or all. Active searches for which connectors are being used. The available input sources appear in white and input sources that are not available appear in grey. All shows all the input sources and allows you to select all the input sources even if you do not have a device connected.

Picture Menu



The picture menu allows you to adjust the appearance of the image including color and brightness. If you select one of the following preset image setting the individual setting are automatically updated.

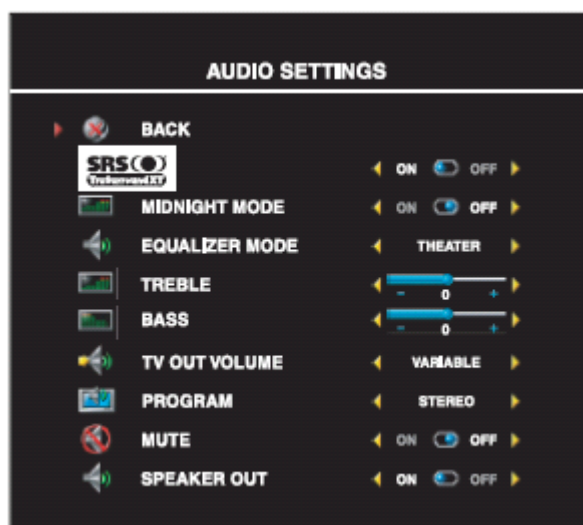
- Movies
- Sports
- Weak Signal
- Multimedia

If you select Personal, you can adjust the individual setting, such as Brightness and Color.

The color temperature presets are: Natural: 6500K

Normal: The native panel temperature: Blue: 9300K Red: 5700K

Audio



The audio menu allows you to set the audio to best fit the type of show you are watching.

SRS Trusurround XT – Delivers virtual surround sound over two speakers from any source, which creates a wider sound with deep rich bass.

MIDNIGHT MODE – Evens out the large volume variations between voice and action scenes. If you select one of the following preset Equalizer Mode settings, the individual audio levels are automatically updated:

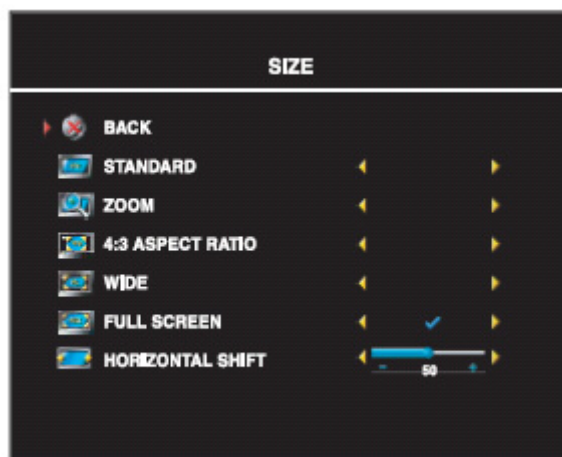
- Music
- Theater
- Voice

If you select Personal, you can adjust the individual audio levels, such as Bass and Treble.

Use Program to select Stereo, Mono, or SAP (Second Audio Program)

Size

Size allows you to adjust the appearance of the image. Use Horizontal shift to adjust the horizontal placement of the image.



Use the following setting to adjust the aspect ratio:

STANDARD – Best selection for viewing digital HDTV, 16:9 or 22:9 DVD movies.

ZOOM – Best selection for viewing TV VCR or 4:3 DVD movie.

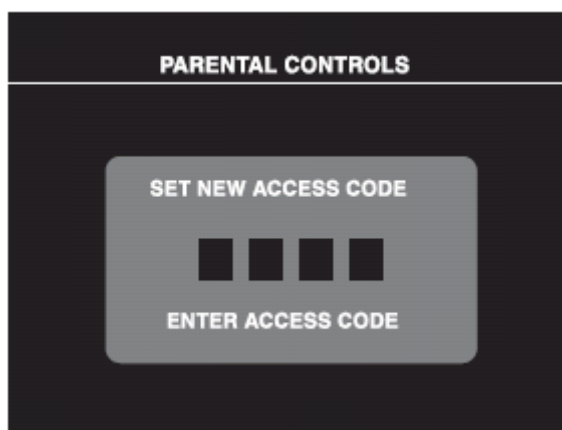
4:3 – Best selection for viewing digital HDTV, VCR or 4:3 DVD movies.

WIDE – Best selection for viewing digital HDTV, 16:9 or 22:9 DVD movies.

FULL SCREEN –Best selection for viewing digital HDTV, or 16:9 DVD movies.

Parental Control

Parental Control allows you to block certain channels or programs to child cannot view programs that are not age appropriate.



To enter the Parental Control menu, you need an access code. The first time you enter access code 3355. You can set the following options to block content:

- Channel Lock – Block selected channels
- Movie Rating –Block movie based on their rating (G, PG, PG-13, R, NC-17, and X)
- TV Rating – Block TV shows based on their rating.
- Block Options – Turns on or off all your parental control setting.

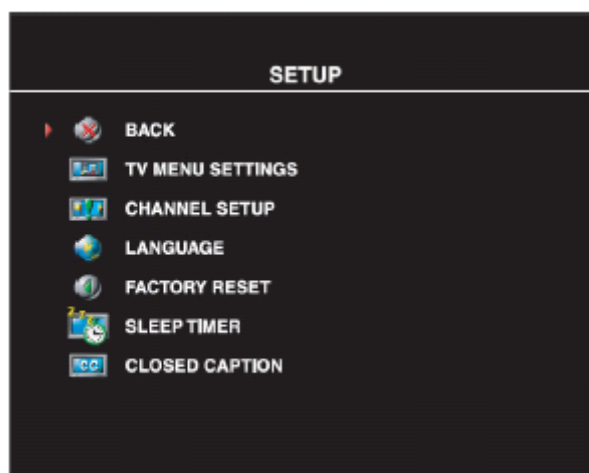
NOTE: You can use clear all to unblock the channels and programs that you have set.

Setting an access Code

After you enter the parental Control menu for the first time, you can set your own four-digit access code. If for any reason you lose or forget your access code, you can use the default code.

1. In the parental control menu, select change code.
2. Using the number pad on the remote control, enter a new access code.
3. Select Exit.

TV Menu Setup



TV Menu Setup allows you to adjust the appearance of the TV menu, to change the language of the TV menu and to restore factory setting.

Use the TV menu setting menu you can select TV Button lock to lock the TV menu and the side panel buttons, when this option is enabled, only the power button functions. To unlock the TV menu and side panel buttons:

1. Press the menu button on the TV. A message appears stating that the TV is locked.
2. While the message is on the TV, press the channel up and volume increase button simultaneously.

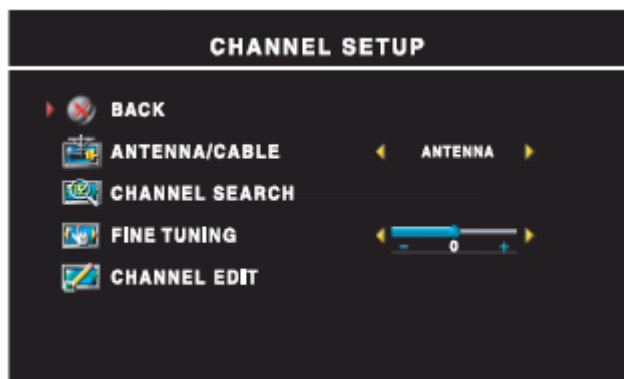
If you are using the DVI connector, you may need to verify the following settings:

Source — The default setting is Auto. The TV automatically detects if a computer (PC) or video device is being used. If the image does not display correctly, you can select the source, **PC** or **Video**, depending on the device you are using.

Color — The default color space is **RGB**. If the colors are not displaying correctly, you can change the setting to **YUV**.

Setting you cable channel

Your TV is set to automatically detect whether you are using an antenna or cable and then set the available channels, some cable providers use an older cable standard that the TV can not automatically detect. If you have your TV connected but can only view channels 5 and 6, complete the following steps:

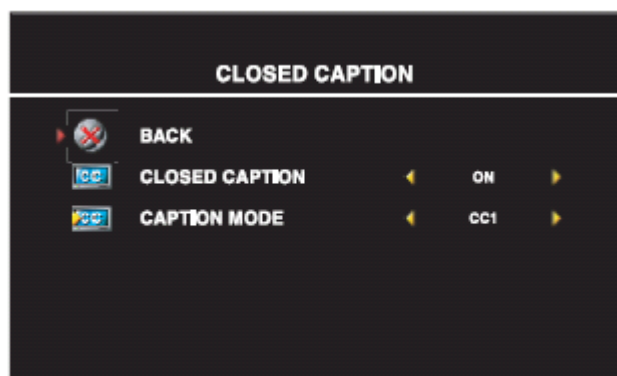


1. Press the menu button, the remote control or TV and enter the TV menu.
2. Select setup and then select channel setup.
3. In channel setup, select Antenna/Cable, and then toggle to cable.
4. If selecting cable does not resolve the issue, repeat steps 1 through step 3 using each available channel setup option (HRC, IRC, and Antenna) until you can view all channels.

Sleep Timer

Sleep Timer allows you to select an increment of time after which the LCD TV display turns off automatically. You can select from 10 minutes to 3 hours

Closed Caption



In the Closed Caption menu, you can select on, off, or Mute. If you select Music automatically displays when you use the mute button on the remote control.

You can choose from the following Caption modes.

- CC1 through CC4 and TXT1 through TXT4 (CC1, CC2, and CC4 offer standard Closed Captioning and CC3 provides closed captioning in a secondary language.)
- CC Mute (automatically turns CC on when you mute the TV volume)

4. ISP Program Instructions

4.1 System Connection

The system should be connected as shown below (Fig 5.1, Fig 5.2, Fig 5.3, Fig 5.4).



Fig 5.1



Fig 5.2

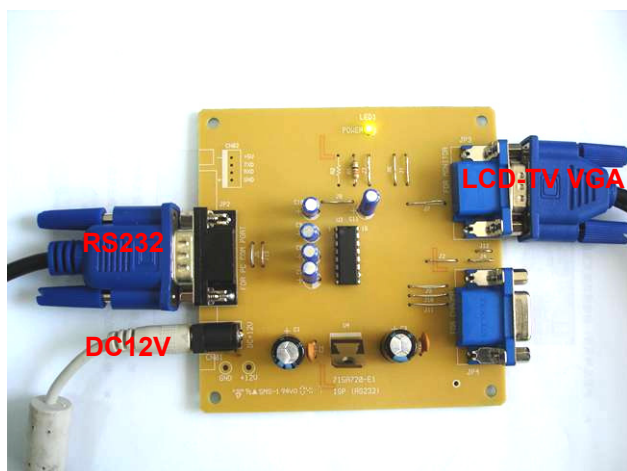
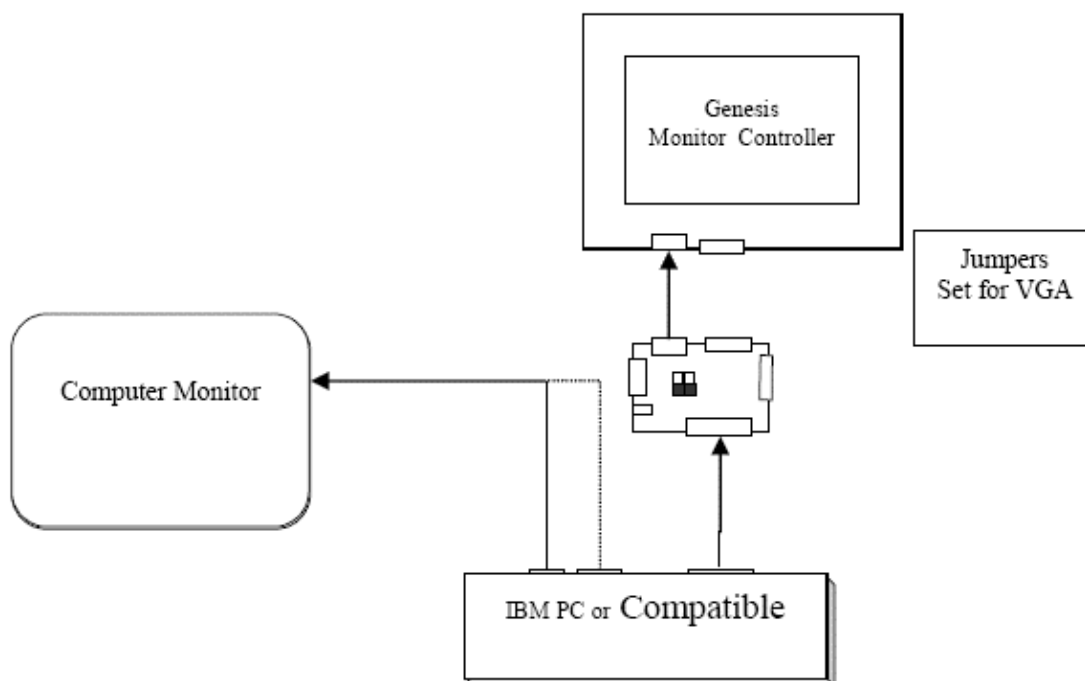


Fig 5.3



APDOF Fig 5.4

4.2 Install the software (Gprobe 5.0) for ISP burn in

Operating system

- (1) Microsoft windows OS.
- (2) 100M free hard-drive space.
- (3) 1 free parallel port for DDC2BI communication.

The relevant soft wares (as Fig5.5)

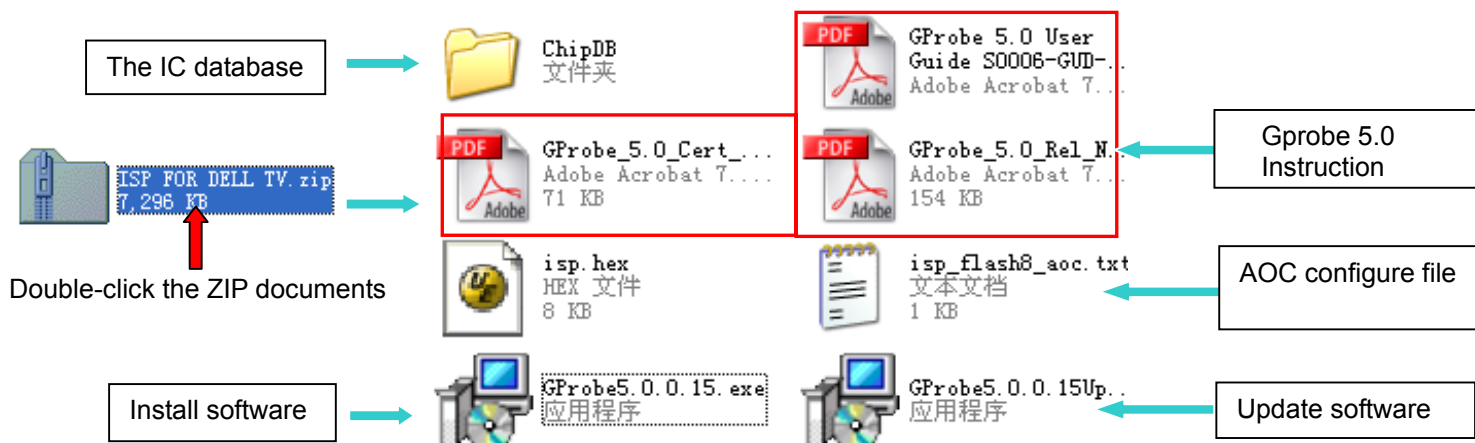


Fig 5.5

A. Double-click the Install software, , as Fig 5.6

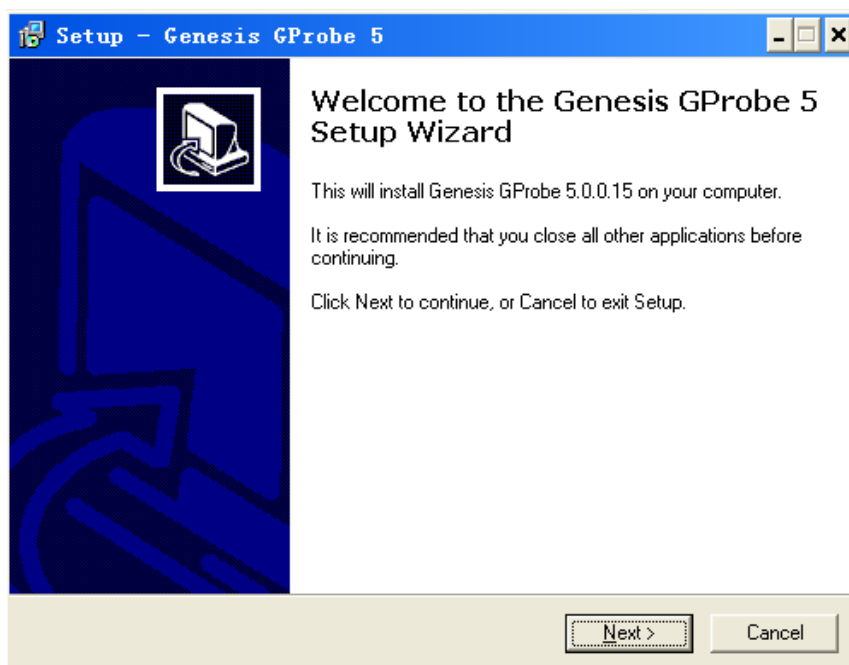


Fig 5.6

Select the folder where you would like Genesis Gprobe 5 to be installed, as Fig 5.7

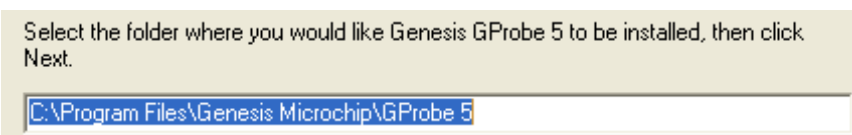


Fig 5.7

Completing the Genesis Gprobe 5 setup wizard, as Fig 5.8

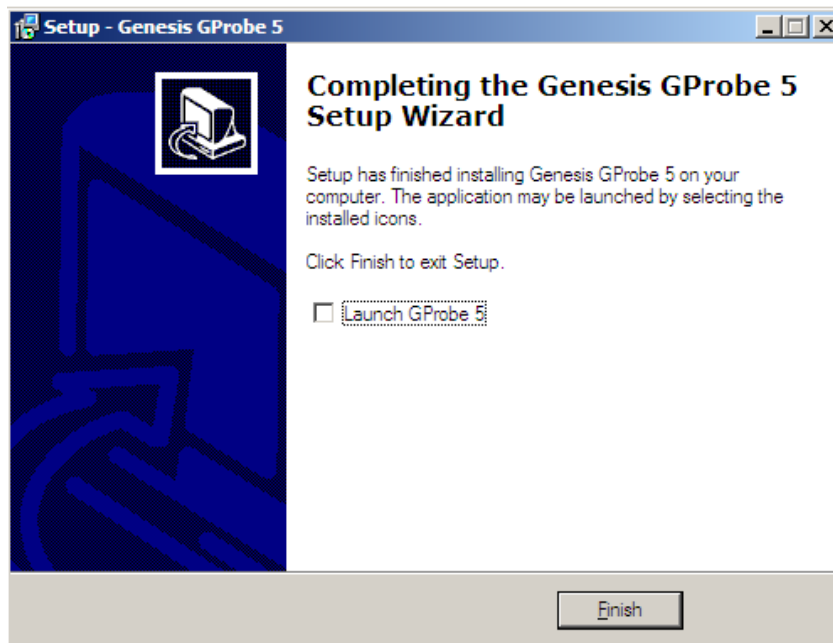



Fig 5.8

Note: After finishing the installation, you must restart the PC.

B. Next, installing the Update software, , as Fig 5.9.

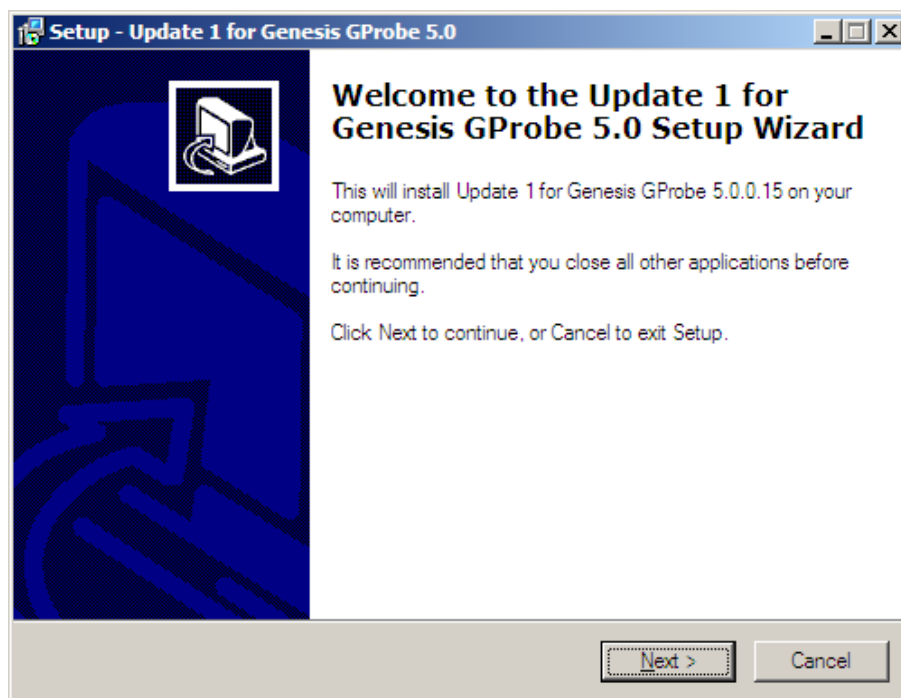


Fig 5.9

Completing the update 1 for Genesis Gprobe 5.0 setup wizard, as Fig 5.10

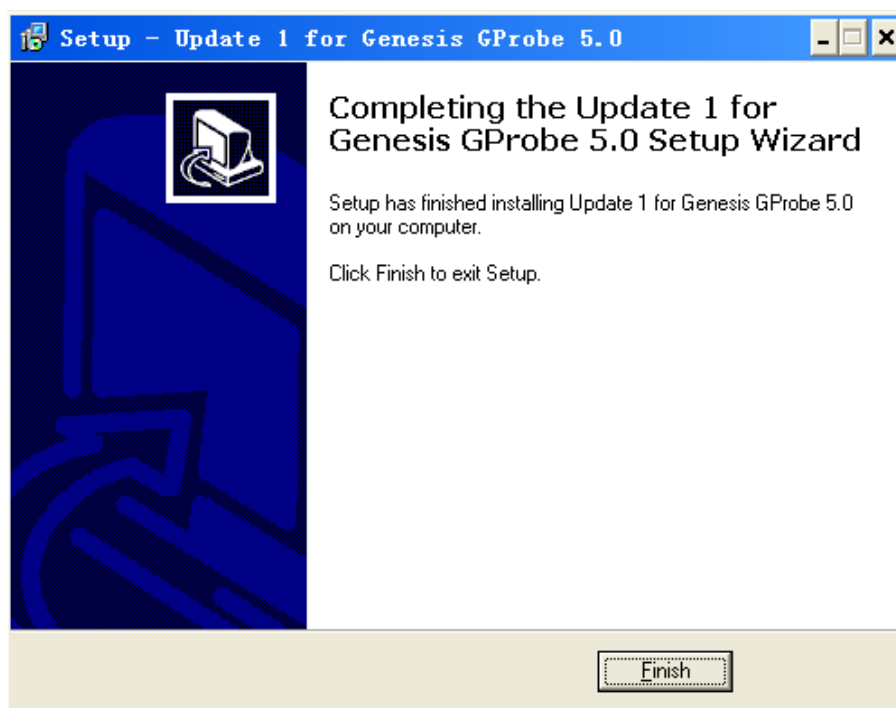




Fig 5.10

B. Copy the “ChipDB”  folder to the install folder, replace the primary one

( Genesis Microchip 2005-8-19 8:39   ChipDB). Installation Finished.

4.3 Run the program

After the installation, a short-cut icon  will appear on your desktop, double click it will run the program.

- (1). Select the IC type FL18532-BD (NOTE: If there is not this selection, please check the “ChipDB”), As Fig 5.9

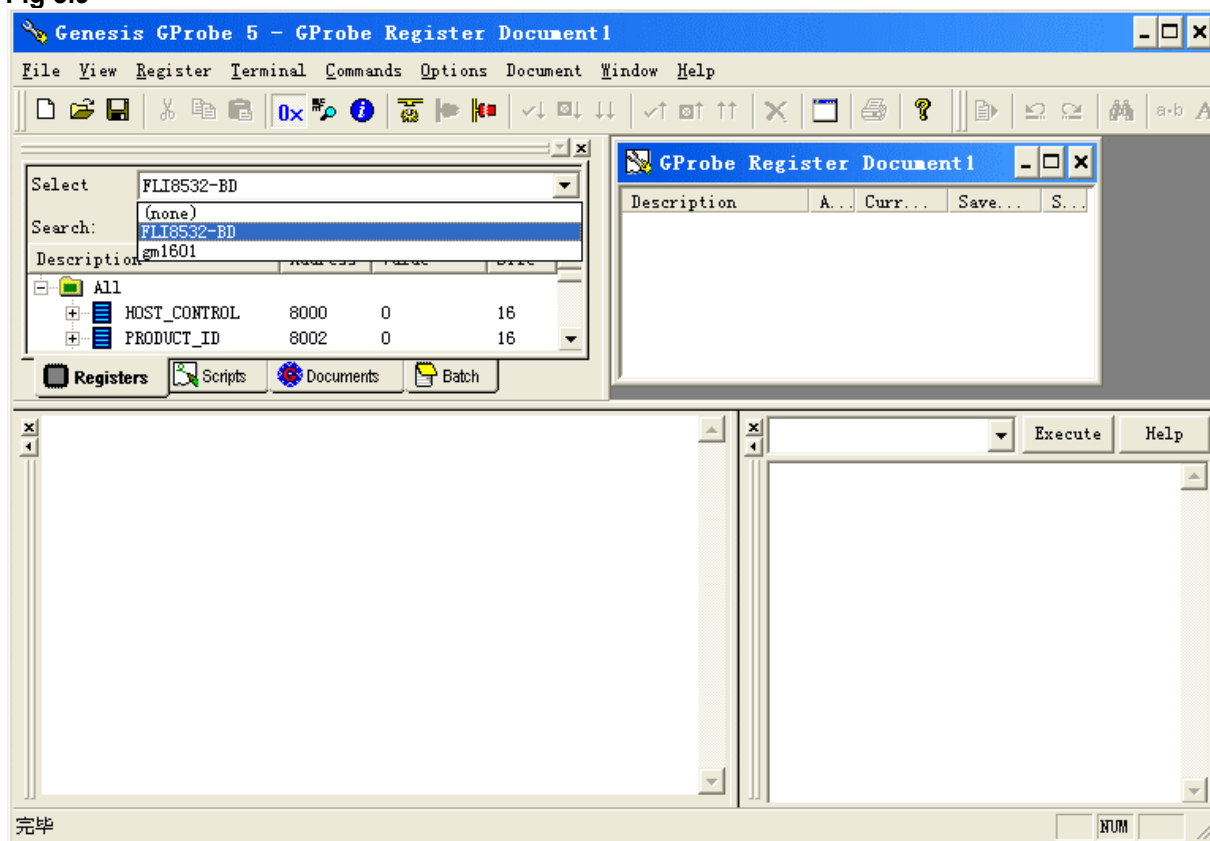


Fig 5.9

- (2). Open the configure file “isp_flash8_aoc.txt”, as Fig 5.10

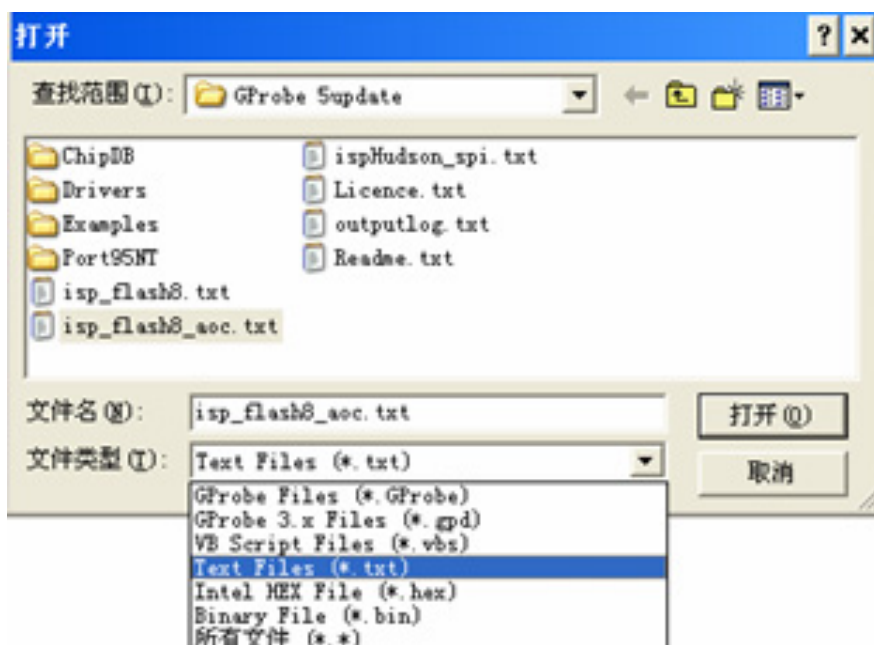


Fig 5.10

The running program as below, Fig 5.11.

```


//Connect PROTOCOL=SERIAL1;PORT=COM1;SPEED=115200
// device tested are as follows:
// Am29LV040B, Am29LV800BT-70, MX29LV320ATTI-90, Fujitsu 29LV800TE-90
//
debugon
SetBuffer 0x3000 4096
Reset 0
delay 500
setDelay 5000
RAMWrite Isp.hex
run 0x500
delay 500
setDelay 32000
FlashErase
fastFlashWrite d:\RD2_Board.hex
delay 500
Reset 1

fastFlashWrite d:\rd2_board.hex
delay 500
Reset 1
//batch isp_flash8_aoc.txt
    
```

```

graph TD
    Start([Press execute button  
ISP is running...]) --> Success([Success])
    Start --> Error([Error])
    Success --> SuccessOut([Access to factory  
menu, whether the  
firmware version is  
the new one])
    Error --> CheckKits([Check the kits and  
the connection])
    CheckKits --> CheckConfig([Check the software  
configuration])
    
```

Fig 5.11

Note: When you change the path of the firmware, you must push  to save the configure (3). Click **Execute**, there will appear the chart as Fig 5.12

```

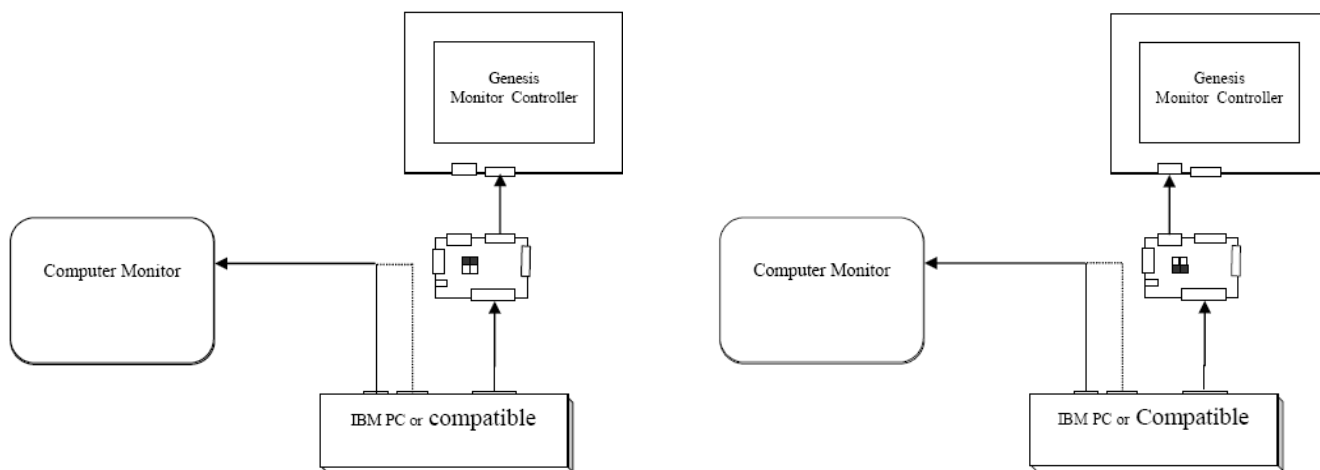
DebugOn: Command Successful.
SetBuffer: Command Successful.
Reset: Command Successful.
Delay: Command Successful.
SetDelay: Command Successful.
RAMWrite: Command Successful.
Run: Command Successful.
Delay: Command Successful.
SetDelay: Command Successful.
Erasing FLASH... Done.
Writing FLASH... Done.
Delay: Command Successful.
Reset: Command Successful.
Execution time: 60.05s
Batch: Command Successful.
Re-initialize NVRAM
---Decoder Calibration START
---Decoder Calibration DONE
RGB Checksum error -RGBFactoryReset
fineTuneOffset 0
theater.
fineTuneOffset 0
    
```

Fig 5.12

5. EDID Program Instruction

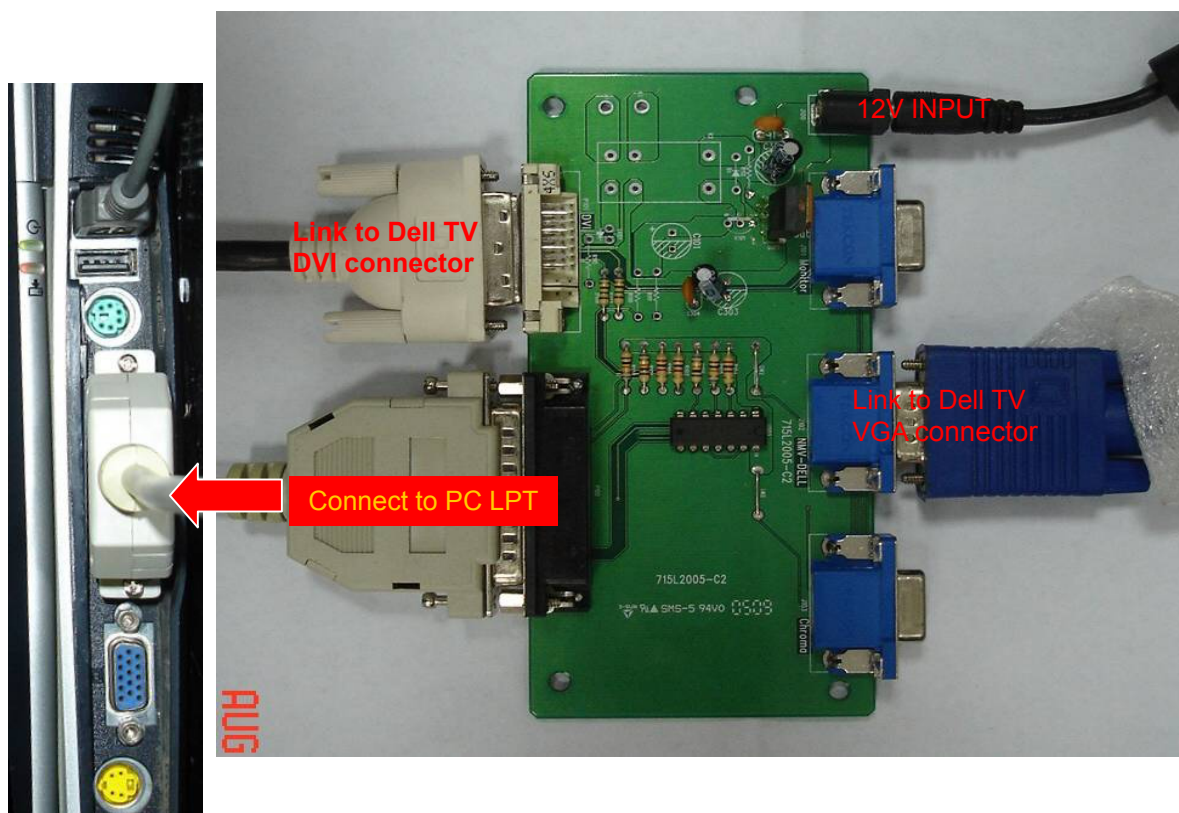
5.1 System Connection

The system should be connected as shown below.



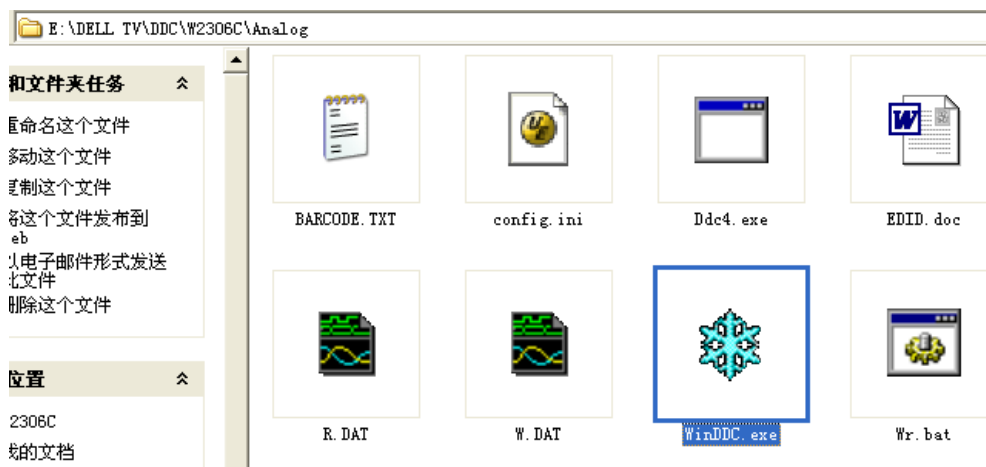
VGA DDC burn in

DVI DDC burn in



Note: VGA and DVI must not connect at the same time.

5.2 Run the DDC burn in program



(1) Double-click "WinDDC.exe"; it will appear the figure below:

```

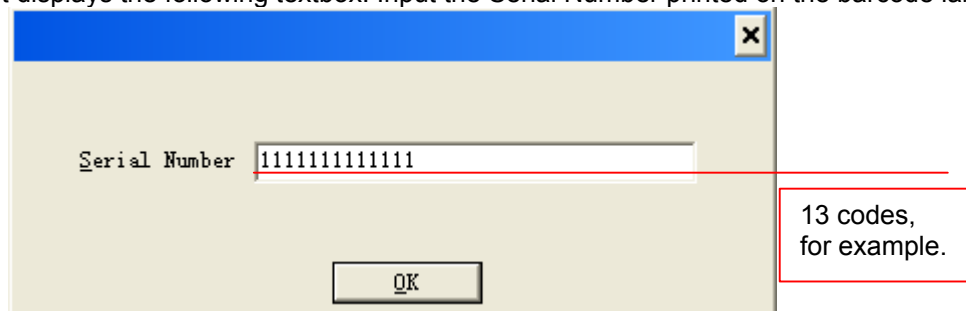
* WinDDC
WriteEDID ReadEDID Help
EDID Data:
00 FF FF FF FF FF FF 00 10 AC 0A D0 0B 95 0D 00
20 0F 01 03 68 32 1E 78 2A C5 C8 A3 57 4A 9C 23
12 48 4C A5 4E 00 81 80 01 01 01 01 01 01 01 01
01 01 01 01 01 01 20 1C 50 A0 50 00 16 30 30 20
25 00 2F 4D 21 00 00 1E 00 00 00 FF 00 31 32 33
34 35 36 37 38 39 30 31 32 33 00 00 00 FD 00 38
4B 1F 40 08 00 0A 20 20 20 20 20 20 00 00 00 FC
00 57 32 33 30 36 43 0A 20 20 20 20 20 00 8E

Manufacturer Name   : DEL
Product Code       : D00A
Model Name         : W2306C

Monitor SN        : 1234567890123[890123]
Week of Manufacture : 32
Year of Manufacture : 2005
InputSignal       : Analog

Checksum          : 8E
  
```

(2) Click "WriteEDID", it displays the following textbox. Input the Serial Number printed on the barcode label.



(3) The process of DVI DDC burn in is the same to VGA burn in process!

6. White Balance, Luminance Adjustment

Approximately 30 minutes should be allowed for warm up before proceeding white balance adjustment.

Before started adjust white balance, please set the Chroma-7120 **MEM. Channel 3 to Natural** colors, **MEM. Channel 4 to 6500K** color, **MEM. Channel 9 to 9300K** colors and **MEM. Channel 10 to 5700K** colors (Nature parameter is $x = 289 \pm 15$, $y = 304 \pm 15$, **6500** parameter is $x = 313 \pm 15$, $y = 329 \pm 15$, **9300** parameter is $x = 283 \pm 15$, $y = 297 \pm 15$, **5700** parameter is $x = 328 \pm 15$, $y = 344 \pm 15$),

The data of Y of all the mode is $PC > 300, AV > 400, S\text{-Video} > 400, Component > 400 \text{cd/m}^2$.

How to setting MEM.channel you can reference to Chroma-7120 user guide or simple use “**SC**” key and “**NEXT**” key to modify x,y,Y value and use “**ID**” key to modify the TEXT description
Following is the procedure to do white-balance adjust

· after there are no OSD pictures on screen ,Press Number key 0000 will into the factory mode, and press Menu key to enter the **Factory Mode**.

· In the factory mode ,the menu as follows:

5700K	R、G、B	} the data is the result of R、G、B after W/B adjustment;
6500K	R、G、B	
9300K	R、G、B	
NATURAL	R、G、B	
Burn In Mode		
Auto Balance	→Auto level adjusts.	
Initial NVRAM	→Initial EEPROM	
Boot Power State	【ON/OFF】	

The steps of the PC W/B adjustment as follows:

I. Initial the EEPROM

Press “Initial NVRAM” button;

II. Bias (Low luminance) adjustment:

Prepare: ensure the currently mode is PC (VGA)

Press “Auto Balance” button (the image is black and white at the PAT42)

III. Gain adjustment:

1. Switch the chroma-7120 to RGB-mode (with press “MODE” button)
2. Let the signal output the white image (press pattern 105), select one of the color temp (as Natural、6500K、9300K、5700K) and adjust R、G、B until up to 100 ± 3 .
3. Select another color temp and follows as item 2.

The steps of the AV W/B adjustment as follows:

The steps of AV W/B adjustment as follows:

Gain adjustment:

1. Switch the chroma-7120 to RGB-mode (with press “MODE” button)
2. Let the signal output the white image (press pattern 105), select one of the color temp (as Natural、6500K、9300K、5700K) and adjust R、G、B until up to 100 ± 3 .
3. Select another color temp and follows as item 2.

The steps of the SV(S-Video) W/B adjustment as follows:

The steps of SV's W/B adjustment is the same as AV's.

The steps of the CP(component) W/B adjustment as follows:

The steps of CP's W/B adjustment as same as PC's.

Max Brightness measurement:

- a. Switch to the full white pattern, in normal mode main menu:
Set <Picture Settings> menu **Brightness, Contrast** to the max.
- b. The Minimum brightness is 400cd/m^2